

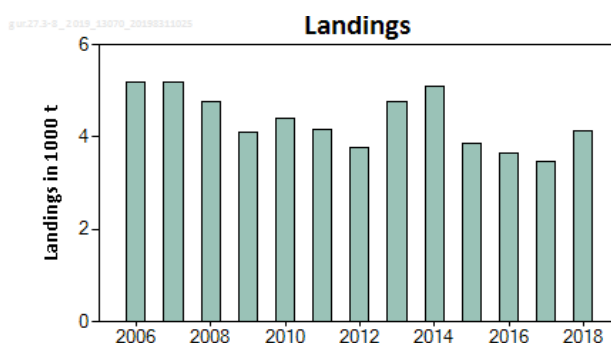
## Red gurnard (*Chelidonichthys cuculus*) in subareas 3–8 (Northeast Atlantic)

### ICES advice on fishing opportunities

ICES advises that when the precautionary approach is applied, landings should be no more than 2894 tonnes in each of the years 2020 and 2021. ICES cannot quantify the corresponding catches.

### Stock development over time

There is limited information to evaluate stock trends. Landings information is of limited use as several countries have reported landings of “mixed gurnards”. Reporting at a species level has improved since 2006, and landings have been between 3311 tonnes and 5049 tonnes.



**Figure 1** Red gurnard in subareas 3–8. Summary of the stock assessment. Official landings in subareas 3–8.

### Stock and exploitation status

**Table 1** Red gurnard in subareas 3–8. State of the stock and fishery relative to reference points.

		Fishing pressure			Stock size					
		2016	2017	2018	2016	2017	2018			
Maximum sustainable yield	$F_{MSY}$	?	?	?	Unknown	$MSY B_{trigger}$	?	?	?	Unknown
Precautionary approach	$F_{pa}, F_{lim}$	?	?	?	Unknown	$B_{pa}, B_{lim}$	?	?	?	Unknown
Management plan	$F_{MGT}$	—	—	—	Not applicable	$B_{MGT}$	—	—	—	Not applicable
Qualitative evaluation	-	?	?	?	Unknown	-	?	?	?	Unknown

### Catch scenarios

The ICES framework for category 6 stocks was applied (ICES, 2012). For stocks with no indication of the fishing mortality in relation to proxies, and with no marked positive trends shown in stock indicators, ICES considers that a precautionary reduction of catches should be implemented every three years. The precautionary buffer was last applied in 2015; it is therefore applied again this year. For stocks in ICES data categories 3–6, only one catch scenario is provided.

Discarding is known to take place, but could not be fully quantified.

**Table 2** Red gurnard in subareas 3–8. The basis for the catch scenarios.

Recent advised landings (2017–2019)		3618 tonnes
Discard rate		Unknown
Precautionary buffer	Applied	0.8
Landings advice *		2894 tonnes

\* [Advice for 2018–2019] × [Precautionary buffer].

### Basis of the advice

**Table 3** Red gurnard in subareas 3–8. The basis of the advice.

Advice basis	Precautionary approach.
Management plan	ICES is not aware of any management plan for red gurnard in this area.

### Quality of the assessment

Species misidentification continues to be a major problem in estimating the landings of all gurnards and, thus, also red gurnard. Sampling under the Data Collection Framework (DCF) regulation is the main source of information to estimate the total landings of red gurnard.

A number of surveys reporting red gurnard have been examined. Each of these surveys cover only a specific area of red gurnard distribution, and at present the surveys are not used to assess stock status.

### Issues relevant for the advice

Discarding is estimated to be high in some fisheries catching this stock. Reported discard rates range from 14% to 94% of the catches of specific fleets.

In 2018, the landing advice was given for the entire distribution of red gurnard in the northeast Atlantic. This year's advice is for the stock only (i.e. subareas 3–8).

### Reference points

No reference points are defined for this stock.

### Basis of the assessment

**Table 4** Red gurnard in subareas 3–8. Basis of the assessment and advice.

ICES stock data category	6 ( <a href="#">ICES, 2018</a> ).
Assessment type	No assessment (ICES, 2019).
Input data	Commercial landings.
Discards and bycatch	Discarding is known to take place, but discards cannot be fully quantified.
Indicators	-
Other information	None.
Working group	Working Group on Widely Distributed Stocks ( <a href="#">WGWIDE</a> ).

### Information from stakeholders

No information available.

### History of the advice, catch, and management

**Table 5** Red gurnard in subareas 3–8. ICES advice as well as official and ICES landings. All weights are in tonnes.

Year	ICES advice	Predicted landings corresp. to advice	Agreed TAC	Official landings	ICES estimates
2006		-	None	5054	
2007		-	None	5049	
2008		-	None	4663	
2009		-	None	3966	
2010		-	None	4278	
2011		-	None	4029	
2012	No increase in catch	-	None	3629	
2013	20% reduction in catches	-	None	4598	
2014	Same catch value as advised for 2013	-	None	4946	
2015	Same catch value as advised for 2013	-	None	3744	
2016	Precautionary approach (decrease catches by at least 20%)	≤ 3618	None	3526	3547
2017	Precautionary approach (same advised catch value as given for 2016)	≤ 3618	None	3311	3061
2018	Precautionary approach	≤ 3618	None	4018 *	3983
2019	Precautionary approach (same advised catch value as given for 2018)	≤ 3618	None		
2020	Precautionary approach (decrease catches by at least 20%)	≤ 2894			
2021	Precautionary approach (same advised catch value as given for 2020)	≤ 2894			

\* Preliminary.

### History of the catch and landings

**Table 6** Red gurnard in subareas 3–8. Catch distribution by fleet in 2018 as estimated by ICES.

Catch (2018)	Landings	Discards
Unknown	100% undefined gears	Unknown
	3983 tonnes	

**Table 7** Red gurnard in subareas 3–8. History of commercial landings; both the official and ICES estimated values (2016 onwards) are presented for each country participating in the fishery. All weights are in tonnes.

Year	Belgium	Spain	France	Jersey	Guernsey	Ireland	Isle of Man	Netherlands	Portugal	UK	Total	ICES estimates
2006	313	0	4550	0	10	0	0	57	0	115	5054	
2007	328	0	4494	1	4	0	0	66	0	156	5049	
2008	352	0	4045	0	8	0	0	92	0	166	4663	
2009	227	0	3307	0	6	0	1	160	1	263	3966	
2010	237	0	3426	0	2	0	0	251	0	362	4278	
2011	306	0	3168	1	2	0	1	295	1	257	4029	
2012	306	0	2698	3	4	26	0	329	7	257	3629	
2013	288	532	3152	3	9	16	2	267	0	329	4598	
2014	263	366	3781	3	6	0	5	241	1	283	4946	
2015	187	82	2919	2	3	0	0	210	1	341	3744	
2016	238	71	2598	3	2	9	1	224	0	381	3526	3547
2017	265	76	2396	0	1	9	4	226	0	335	3311	3061
2018 *	313	77	2968	0	0	13	1	302	0	342	4018	3983

\* Preliminary.

**Table 8** Red gurnard in subareas 3–8. History of commercial landings; official values are presented by area. All weights are in tonnes.

Year	ICES divisions																					Total	
	3.a	4.a	4.b	4.c	5.b	6.a	6.b	7.a	7.b	7.c	7.d	7.e	7.f	7.g	7.h	7.j	7.k	8.a	8.b	8.c	8.d		8.e
2006	0	13	83	64	0	32	1	11	9	12	1101	2803	229	16	446	5	1	153	60	1	5	0	5045
2007	0	12	120	55	2	21	0	7	7	15	1229	2674	246	15	437	4	0	139	59	3	2	0	5049
2008	0	34	64	54	0	28	3	5	7	16	1236	2451	249	9	408	5	0	66	24	3	1	0	4663
2009	0	58	59	92	0	94	2	4	8	6	1293	1557	112	22	510	7	0	98	40	1	3	0	3996
2010	0	79	63	86	0	101	46	13	8	10	1531	1608	132	23	433	9	0	100	33	0	2	0	4278
2011	0	66	29	51	0	69	54	13	5	6	1295	1753	124	20	372	9	0	112	46	1	3	0	4029
2012	0	83	71	78	0	51	7	8	2	5	1244	1441	145	53	294	2	0	83	50	8	1	0	3629
2013	0	88	109	60	0	47	0	10	2	6	1193	1692	170	58	477	2	0	79	72	532	1	0	4598
2014	0	102	52	68	0	47	3	7	1	2	1294	1642	115	19	1069	1	0	82	75	363	3	0	4946
2015	0	133	102	53	0	58	1	4	3	1	790	1553	87	6	703	1	0	95	70	81	2	0	3744
2016	0	112	83	117	0	76	1	11	3	1	906	1268	114	16	608	1	0	87	63	56	1	0	3526
2017	0	53	44	90	0	27	1	14	1	0	874	1424	83	38	473	3	0	78	48	59	1	0	3311
2018 *	0	106	39	113	0	41	0	9	0	0	902	1793	164	28	631	4	0	80	43	62	2	0	4018

\* Preliminary.

## Summary of the assessment

There is no assessment for red gurnard in this area.

## Sources and references

- ICES. 2012. ICES Implementation of Advice for Data-limited Stocks in 2012 in its 2012 Advice. ICES CM 2012/ACOM:68. 42 pp. <https://doi.org/10.17895/ices.pub.5322>.
- ICES. 2018. Advice basis. *In* Report of the ICES Advisory Committee, 2018. ICES Advice 2018, Book 1, Section 1.2. <https://doi.org/10.17895/ices.pub.4503>.
- ICES. 2019. Working Group on Widely Distributed Stocks (WGWIDE). ICES Scientific Reports. 1:36. 948 pp. <http://doi.org/10.17895/ices.pub.5574>

Recommended citation: ICES. 2019. Red gurnard (*Chelidonichthys cuculus*) in subareas 3–8 (Northeast Atlantic). *In* Report of the ICES Advisory Committee, 2019. ICES Advice 2019, gur.27.3-8. <https://doi.org/10.17895/ices.advice.4881>.