

## Pollack (*Pollachius pollachius*) in subareas 6–7 (Celtic Seas and the English Channel)

### ICES advice on fishing opportunities

ICES advises that when the MSY approach and precautionary considerations are applied, there should be zero catch in 2025.

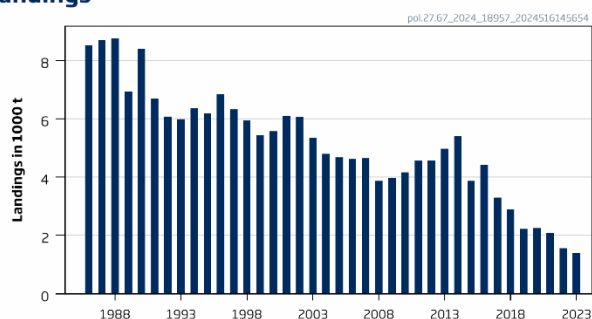
### Non-fisheries conservation considerations

Conservation aspects and associated management measures may exist at a national or regional level but were not reviewed by ICES.

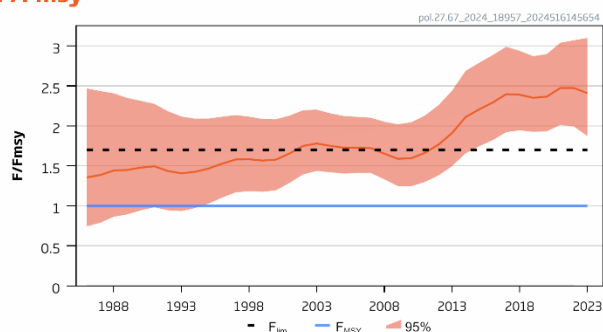
### Stock development over time

Fishing pressure on the stock is above  $F_{MSY}$  and  $F_{lim}$ ; stock size is below MSY  $B_{trigger}$  and  $B_{lim}$ .

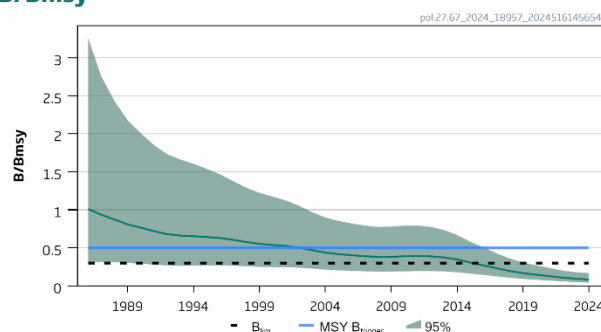
#### Landings



#### F/F<sub>MSY</sub>



#### B/B<sub>MSY</sub>



**Figure 1** Pollack in subareas 6–7. Summary of the stock assessment. Official landings prior to 2003, when ICES landings became available. Discards are considered negligible.

### Catch scenarios

**Table 1** Pollack in subareas 6–7. Assumptions made for the interim year and in the forecast.

Variable	Value	Notes
F (2024)/ $F_{MSY}$	1.62	Based on a catch of 925 tonnes for 2024
B (2025)/ $B_{MSY}$	0.089	Short-term forecast based on a catch of 925 tonnes for 2024
Catch (2024)	925	TAC for 2024; in tonnes

**Table 2** Pollack in subareas 6–7. Annual catch scenarios. Weights are in tonnes.

Basis	Total catch (2025)	Fishing mortality $F_{2025}/F_{MSY}$	Stock size $B_{2026}/B_{MSY}$	% B change <sup>^</sup>	% TAC change <sup>^^</sup>	% advice change <sup>^^^</sup>
ICES advice basis						
MSY approach (F = 0)	0	0	0.144	61	-100	
Other scenarios						
$F_{MSY}$	131	1	0.137	54	-86	
$F_{2024}$	1348	1.62	0.079	-11.5	46	
F = 0	0	0	0.144	61	-100	

<sup>^</sup> Biomass 2026 relative to biomass 2025.

<sup>^^</sup> Total catch in 2025 relative to the sum of “Subarea 7” TAC 2024 and “Subarea 6; United Kingdom and international waters of 5b; international waters of 12 and 14” TAC 2024 (925 tonnes).

<sup>^^^</sup> Advice in 2025 relative to advice in 2024 (0 tonnes), options were left blank because they cannot be calculated.

### Basis of the advice

**Table 3** Pollack in subareas 6–7. The basis of the advice.

Advice basis	MSY approach
Management plan	ICES is aware of the multiannual management plan (MAP) that has been adopted by the EU for this stock (EU, 2019) and that ICES considers to be precautionary. The MAP stipulates that when the $F_{MSY}$ ranges are not available, fishing opportunities should be based on the best available advice. There is no agreed shared management plan between the EU and the UK for this stock, and ICES provides advice according to ICES MSY approach and precautionary considerations.

### Quality of the assessment

The assessment was benchmarked in 2023 (ICES, 2023a). The method for providing advice changed in 2023, following ICES guidelines (ICES, 2023b); advice has been based on a SPiCT assessment since 2023. In 2024, improvements were implemented to the SPiCT model to ensure the consistency in the forecast (ICES, 2024).

The surveys used to calculate the biomass index do not target preferred pollack habitat, and the index is based on few samples. Although the index is uncertain, it shows a strong declining trend.

Recreational catch is likely to be a large component of the total catch (Radford *et al.*, 2018). Due to lack of data, recreational catch is not included in the assessment; however, the current assessment has been shown to be robust to a range of assumptions of recreational catch levels.

The stock structure is poorly defined.

### Issues relevant for the advice

The benchmarked assessment (ICES, 2023a) resulted in a revised perception of the stock, with stock size below  $B_{lim}$  since 2016. Previously, advice was issued under the precautionary approach; the present advice is based on MSY approach and is for zero catch.

## Reference points

**Table 4** Pollack in subareas 6–7. Reference points, values, and their technical basis.\*

Framework	Reference point	Value	Technical basis	Source
MSY approach	MSY $B_{trigger}$	$\frac{B}{B_{MSY}} = 0.5 *$	Relative value from the SPiCT assessment model. $B_{MSY}$ is estimated directly from the SPiCT model and changes when the assessment is updated.	ICES (2023a)
	$F_{MSY}$	$\frac{F}{F_{MSY}} = 1 *$	Relative value from the SPiCT assessment model. $F_{MSY}$ is estimated directly from the SPiCT model and changes when the assessment is updated.	ICES (2023a)
Precautionary approach	$B_{lim}$	$\frac{B}{B_{MSY}} = 0.3 *$	Relative value (equilibrium yield at this biomass is 50% of MSY)	ICES (2023a)
	$B_{pa}$	Not defined		
	$F_{lim}$	$1.7 \times \frac{F}{F_{MSY}}$	Relative value (the F that drives the stock to $B_{lim}$ )	ICES (2023a)
	$F_{pa}$	Not defined		
Management plan	$SSB_{mgt}$	Not defined		
	$F_{mgt}$	Not defined		

\* Reference points are defined in terms of relative values. The SPiCT estimated values of the ratios  $F/F_{MSY}$  and  $B/B_{MSY}$  are used to estimate stock status relative to the MSY reference points.

## Basis of the assessment

**Table 5** Pollack in subareas 6–7. The basis of the assessment.

ICES stock data category	2 (ICES, 2023b)
Assessment type	Surplus Production model in Continuous Time (SPiCT; ICES, 2024)
Input data	Commercial landings; VAST survey index from 2005, utilizing Irish Groundfish Survey [G7212], Irish Anglerfish and Megrin Survey [G3098], French Southern Atlantic Bottom Trawl Survey [G9527] and French Channel Groundfish Survey [G3425].
Discards and bycatch	Negligible (less than 1% of the commercial catch)
Recreational catches	Not used, but considered substantial
Indicators	None
Other information	Last benchmarked in 2023 (ICES, 2023a)
Working group	Working Group for the Celtic Seas Ecoregion (WGCSE)

## History of the advice, catch, and management

**Table 6** Pollack in subareas 6–7. ICES advice, the agreed TAC, and ICES estimates of commercial landings. Weights are in tonnes.

Year	ICES advice	Commercial catch corresponding to advice	Agreed TAC Subarea 6*	Agreed TAC Subarea 7	ICES estimates of commercial landings		
					Subarea 6	Subarea 7	Total
2000		-	1100	17000	191	5377	5568
2001		-	1100	17000	217	5885	6102
2002		-	1100	17000	131	5922	6053
2003		-	880	17000	178	5168	5346
2004		-	704	17000	123	4679	4802
2005		-	563	17000	47	4629	4676
2006		-	450	15300	31	4581	4612
2007		-	450	15300	51	4593	4644
2008		-	450	15300	61	3814	3875
2009		-	450	15300	34	3941	3976
2010		-	450	13770	75	4089	4164
2011		-	397	13495	50	4504	4554
2012	No increase in catch	-	397	13495	43	4530	4573
2013	Catch should be no more than 1% more than recent catch (last three years)	< 4200	397	13495	58	4907	4965
2014	Same advice as 2013	< 4200	397	13495	44	5366	5409
2015	Same advised values as given for 2013	< 4200	397	13495	49	3818	3867

Year	ICES advice	Commercial catch corresponding to advice	Agreed TAC Subarea 6*	Agreed TAC Subarea 7	ICES estimates of commercial landings		
					Subarea 6	Subarea 7	Total
2016	Precautionary approach (same advised commercial landings value as given for 2015)	≤ 4200	397	13495	76	4336	4413
2017	Precautionary approach (same advised commercial landings value as provided for 2016)	≤ 4200	397	12146	45	3256	3301
2018	Precautionary approach	≤ 4200	397	12163	63	2842	2905
2019	Precautionary approach	≤ 3360	397	12163	54	2167	2221
2020	Precautionary approach	≤ 3360	238	12163	49	2206	2255
2021	Precautionary approach	≤ 3360	184	9426	77	2011	2088
2022	Precautionary approach	≤ 3360	156	8012	33	1525	1558
2023	Precautionary approach	≤ 3360	125	6410	25	1378	1403
2024	MSY approach	0	93	832			
2025	MSY approach	0					

\* Subarea 6, European Union and international waters of Division 5.b (EC until 2020; UK thereafter), and international waters of subareas 12 and 14.

**Table 7** Pollack in subareas 6–7. Catch distribution by fleet in 2023 as estimated by ICES.

Total catch	Commercial landings				Commercial discards	Recreational catch
Unknown	Lines 25%	Otter trawlers 13.8%	Static nets 49%	Others 11.9%	< 1%	Estimated to be substantial
	1403 tonnes					

**Table 8** Pollack in subareas 6–7. History of official commercial landings in **Subarea 6** by country. Weights are in tonnes.

Year	Belgium	Denmark	France	Germany	Ireland	Netherlands	Norway	Portugal	Spain	Sweden	UK	Total Subarea 6
1950	1	-	-	-	-	-	-	-	-	-	295	296
1951	-	-	-	-	-	-	-	-	-	-	484	484
1952	-	-	-	-	-	1	-	-	-	-	503	504
1953	-	-	-	-	-	-	-	-	-	-	422	422
1954	-	-	-	-	-	-	-	-	-	-	452	452
1955	-	-	-	-	-	-	-	-	-	-	566	566
1956	-	-	-	-	-	-	-	-	-	-	528	528
1957	-	-	-	-	-	-	-	-	-	-	547	547
1958	.	-	-	23	-	-	-	-	-	-	710	733
1959	1	-	-	6	-	-	-	-	-	-	607	614
1960	15	-	-	-	-	-	-	-	-	-	441	456
1961	1	-	-	1	125	-	-	-	-	-	259	386
1962	2	-	-	8	197	-	-	-	-	-	235	442
1963	6	-	-	2	204	-	-	-	-	-	320	532
1964	1	-	-	1	130	-	-	-	-	-	368	500
1965	1	-	-	1	402	-	-	-	-	-	496	900
1966	2	-	-	-	200	-	-	-	-	-	428	630
1967	1	-	-	1	263	-	-	-	-	1106	413	1784
1968	5	-	-	2	214	-	148	-	-	1012	500	1881
1969	1	-	-	4	282	-	-	-	-	1224	667	2178
1970	2	-	-	1	398	-	-	-	-	756	447	1604
1971	1	-	-	5	75	-	-	-	-	750	256	1087
1972	1	-	-	1	127	-	-	-	-	779	317	1225
1973	2	-	-	-	-	-	-	-	-	-	503	505
1974	6	-	-	-	-	3	-	-	-	-	359	368
1975	< 0.5	-	-	1	-	1	4	-	-	-	393	399
1976	7	-	-	-	-	1	-	-	-	-	519	527
1977	-	-	196	-	-	1	2	-	-	-	493	692
1978	-	-	196	-	-	-	4	-	-	-	553	753

Year	Belgium	Denmark	France	Germany	Ireland	Netherlands	Norway	Portugal	Spain	Sweden	UK	Total Subarea 6
1979	-	-	310	-	-	-	-	-	-	-	350	660
1980	-	-	36	-	-	-	-	-	-	-	233	269
1981	-	-	342	-	-	-	-	-	55	-	185	582
1982	-	< 0.5	272	-	-	-	-	-	95	-	103	470
1983	-	-	331	-	-	-	-	-	86	-	148	565
1984	-	-	212	-	-	-	-	-	222	-	194	628
1985	< 0.5	-	224	1	-	-	-	-	283	-	328	836
1986	-	-	145	-	223	-	-	-	2217	-	187	2772
1987	-	< 0.5	108	-	103	-	-	-	860	-	259	1330
1988	-	< 0.5	128	-	163	-	-	-	1925	-	221	2437
1989	-	< 0.5	111	1	103	-	-	-	-	-	179	394
1990	-	-	76	-	150	-	1	-	-	-	192	419
1991	-	-	31	-	145	-	-	-	4	-	189	369
1992	-	< 0.5	21	-	23	-	-	-	< 0.5	-	203	247
1993	-	-	39	-	12	-	-	-	-	-	273	324
1994	-	-	34	< 0.5	26	-	< 0.5	-	-	-	276	336
1995	-	-	64	3	83	-	-	-	-	-	354	504
1996	-	< 0.5	29	< 0.5	97	-	1	-	-	-	210	337
1997	-	-	14	1	69	-	2	-	-	-	162	248
1998	-	-	21	-	60	-	-	< 0.5	< 0.5	-	147	228
1999	-	-	-	-	73	-	3	-	< 0.5	-	136	212
2000	-	-	11	2	62	-	-	-	-	-	116	191
2001	-	-	8	-	108	-	-	-	-	-	101	217
2002	-	-	9	-	26	-	-	-	-	-	96	131
2003	< 0.5	-	3	-	88	-	1	-	-	-	111	203
2004	< 0.5	-	2	-	68	-	1	-	-	-	65	136
2005	-	-	23	-	28	-	-	-	-	-	16	67
2006	-	-	3	< 0.5	31	-	< 0.5	-	4	-	5	42
2007	-	-	10	< 0.5	26	-	7	-	-	-	21	64
2008	-	-	8	-	21	-	1	-	-	-	23	54
2009	-	-	7	-	6	-	< 0.5	-	-	-	25	38
2010	-	-	6	-	34	-	< 0.5	-	-	-	39	80
2011	-	-	2	-	12	-	1	-	-	-	36	51
2012	-	-	2	-	10	-	< 0.5	-	2	-	33	48
2013	-	-	1	-	34	-	< 0.5	-	-	-	22	58
2014	-	-	1	-	25	-	< 0.5	-	-	-	18	44
2015	-	-	< 0.5	-	23	-	< 0.5	-	-	-	25	49
2016	-	-	< 0.5	-	44	-	< 0.5	-	-	-	31	76
2017	-	-	< 0.5	-	33	-	< 0.5	-	-	-	14	47
2018	-	-	< 0.5	-	22 <sup>c</sup>	-	< 0.5	-	-	-	29	51 <sup>c</sup>
2019	-	-	3	-	22 <sup>c</sup>	-	< 0.5	-	-	-	27	51 <sup>c</sup>
2020	-	-	< 0.5	-	16 <sup>c</sup>	-	-	-	-	-	32	48 <sup>c</sup>
2021	-	-	2	-	30 <sup>c</sup>	-	-	-	< 0.5	-	43	75 <sup>c</sup>
2022*	-	-	7	1	11	-	-	-	-	-	16	36
2023*	-	-	4	-	7	-	-	-	-	-	13	24

\* Preliminary official landings.

<sup>c</sup> Incomplete/missing as a result of part of the data being unavailable under data confidentiality clauses.

**Table 9** Pollack in subareas 6–7. History of official commercial landings in **Subarea 7** by country. Weights are in tonnes.

Year	Belgium	Denmark	France	Germany	Ireland	Netherlands	Norway	Spain	UK	Total Subarea 7
1950	93	-	-	-	-	-	-	-	375	468
1951	74	-	-	2	-	-	-	-	380	456
1952	80	-	-	10	-	-	-	-	336	426
1953	34	-	-	-	-	-	-	-	252	286
1954	17	-	-	4	-	-	-	-	365	386
1955	38	-	-	-	-	-	-	-	247	285
1956	67	-	-	1	-	-	-	-	155	223
1957	219	-	-	6	-	-	-	-	367	592
1958	342	-	-	17	-	-	-	-	233	592
1959	158	-	-	32	-	-	-	-	251	441
1960	317	-	-	-	-	-	-	-	267	584
1961	268	-	-	-	360	-	-	-	210	838
1962	367	-	-	1	369	-	-	-	170	907
1963	95	-	-	-	411	-	-	-	176	682
1964	299	-	-	-	342	-	-	-	194	835
1965	362	-	-	-	335	-	-	-	231	928
1966	456	-	-	-	438	-	-	-	175	1069
1967	417	-	-	-	474	-	-	-	202	1093
1968	214	-	-	-	508	-	-	-	167	889
1969	142	-	-	-	794	-	-	-	161	1097
1970	165	-	-	1	724	-	-	-	120	1010
1971	114	-	-	-	673	-	-	-	116	903
1972	142	-	-	-	1073	-	-	-	123	1338
1973	89	-	-	-	-	3	-	-	127	219
1974	299	-	-	-	-	13	-	-	223	535
1975	295	-	-	-	-	17	-	-	290	602
1976	339	-	-	-	-	4	-	-	421	764
1977	157	1	3569	-	-	1	-	-	465	4193
1978	186	21	5496	14	-	8	-	-	515	6240
1979	151	18	5119	76	-	1	-	-	696	6061
1980	237	7	5242	-	-	1	-	1	769	6257
1981	244	-	5814	-	-	3	-	23	780	6864
1982	154	-	4253	-	-	-	-	32	1022	5461
1983	167	-	6214	-	-	-	-	26	1045	7452
1984	207	-	3927	-	-	-	-	486	1100	5720
1985	269	-	3741	-	-	-	-	20	1022	5052
1986	241	-	4574	-	1335	-	-	17	1795	7962
1987	149	-	5213	-	848	-	-	19	2010	8239
1988	191	-	5211	-	1066	-	-	22	1740	8230
1989	145	-	3893	-	994	-	-	18	1487	6537
1990	133	-	4831	-	1066	-	-	26	1914	7970
1991	76	-	3211	-	1045	-	-	22	1962	6316
1992	62	-	2849	-	1014	-	-	19	1889	5833
1993	55	-	2325	-	1137	-	-	7	2135	5659
1994	94	-	2621	-	921	-	-	8	2391	6035
1995	88	2	2315	-	1107	-	-	4	2168	5684
1996	94	-	2684	-	1190	6	-	5	2519	6498
1997	99	-	2443	-	984	4	< 0.5	7	2540	6077
1998	92	-	2375	-	886	1	-	11	2347	5712
1999	86	-	-	-	976	-	3	19	1703	2787
2000	71	-	2422	-	1069	-	-	5	1810	5377
2001	100	-	2515	-	1274	-	-	9	1987	5885
2002	117	-	2481	-	1308	-	-	17	1999	5922
2003	113	-	2284	-	1151	-	-	12	1788	5348
2004	104	-	1914	-	1049	1	-	13	1705	4786
2005	98	-	2198	-	728	1	-	16	1684	4725

Year	Belgium	Denmark	France	Germany	Ireland	Netherlands	Norway	Spain	UK	Total Subarea 7
2006	78	-	2223	-	1144	1	-	50	1569	5066
2007	90	-	2003	-	1034	3	-	2	1850	4982
2008	76	-	1606	-	1058	1	-	20	1544	4305
2009	41	-	1686	-	1198	4	-	5	1614	4548
2010	35	-	1859	-	1367	2	-	6	1515	4784
2011	37	-	1801	-	1296	2	-	8	1908	5052
2012	43	-	1430	-	1520	1	< 0.5	4	1898	4896
2013	39	-	1813	-	1730	1	-	22	1936	5541
2014	84	-	2068	-	1508	1	-	27	2184	5872
2015	32	-	1176	-	1447	1	-	25	1501	4182
2016	42	-	1257	-	1536	< 0.5	-	23	1958	4817
2017	19	-	960	-	1487	< 0.5	-	23	1398	3887
2018	21	-	819	-	878 <sup>c</sup>	9	-	25	1267	3018 <sup>c</sup>
2019	12	-	550	-	14 <sup>c</sup>	2	-	5	988	1570 <sup>c</sup>
2020	17	-	584	-	602 <sup>c</sup>	2	-	3	974	2182 <sup>c</sup>
2021	7	-	588	-	590 <sup>c</sup>	2	-	1	802	1990 <sup>c</sup>
2022*	7	-	494	-	355	1	-	< 0.5	671	1528
2023*	5	-	493	< 0.5	312	< 0.5	-	1	555	1366

\* Preliminary official landings.

<sup>c</sup> Incomplete/missing as a result of part of the data being unavailable under data confidentiality clauses.

### Summary of the assessment

**Table 10** Pollack in subareas 6–7. Assessment summary. Landings values used in the assessment, comprised of official landings prior to 2003 and ICES estimated landings since 2003. “Low” and “High” refer to 95% confidence intervals. Weights are in tonnes.

Year	Relative biomass			Landings*	Relative fishing pressure		
	Low	Value	High		Low	Value	High
1986	0.3135	1.0113	3.2619	8517	0.7447	1.3557	2.4682
1987	0.3172	0.9350	2.7557	8709	0.7883	1.3857	2.4359
1988	0.3130	0.8727	2.4327	8742	0.8640	1.4421	2.4073
1989	0.3006	0.8092	2.1784	6931	0.8939	1.4493	2.3498
1990	0.2916	0.7654	2.0089	8389	0.9451	1.4786	2.3133
1991	0.2797	0.7196	1.8513	6685	0.9823	1.4951	2.2755
1992	0.2673	0.6804	1.7320	6080	0.9453	1.4367	2.1835
1993	0.2632	0.6614	1.6620	5983	0.9348	1.4069	2.1175
1994	0.2657	0.6533	1.6066	6371	0.9721	1.4257	2.0909
1995	0.2685	0.6432	1.5405	6188	1.0274	1.4659	2.0917
1996	0.2699	0.6295	1.4682	6835	1.1031	1.5272	2.1145
1997	0.2659	0.6055	1.3792	6325	1.1690	1.5798	2.1351
1998	0.2576	0.5769	1.2922	5940	1.1838	1.5825	2.1155
1999	0.2500	0.5531	1.2239	5438	1.1763	1.5665	2.0860
2000	0.2463	0.5379	1.1746	5568	1.1956	1.5784	2.0836
2001	0.2451	0.5250	1.1247	6102	1.2883	1.6562	2.1290
2002	0.2391	0.5019	1.0535	6053	1.3945	1.7500	2.1962
2003	0.2268	0.4687	0.9688	5346	1.4373	1.7796	2.2033
2004	0.2136	0.4383	0.8996	4802	1.4206	1.7506	2.1574
2005	0.2040	0.4176	0.8548	4676	1.4042	1.7270	2.1239
2006	0.1973	0.4027	0.8218	4612	1.4118	1.7270	2.1126
2007	0.1917	0.3900	0.7935	4644	1.4110	1.7224	2.1026
2008	0.1872	0.3808	0.7746	3875	1.3322	1.6532	2.0516

Year	Relative biomass			Landings*	Relative fishing pressure		
	Low	Value	High		Low	Value	High
2009	0.1873	0.3823	0.7802	3976	1.2479	1.5878	2.0201
2010	0.1909	0.3889	0.7922	4164	1.2462	1.5968	2.0461
2011	0.1947	0.3933	0.7941	4554	1.2995	1.6634	2.1291
2012	0.1947	0.3884	0.7750	4573	1.3807	1.7662	2.2592
2013	0.1900	0.3738	0.7356	4965	1.4960	1.9103	2.4393
2014	0.1800	0.3472	0.6698	5409	1.6572	2.1103	2.6874
2015	0.1617	0.3061	0.5794	3867	1.7455	2.2062	2.7885
2016	0.1438	0.2700	0.5072	4413	1.8208	2.2918	2.8846
2017	0.1249	0.2314	0.4287	3301	1.9219	2.3969	2.9893
2018	0.1065	0.1958	0.3599	2905	1.9441	2.3900	2.9382
2019	0.0911	0.1673	0.3074	2221	1.9259	2.3514	2.8709
2020	0.0793	0.1467	0.2713	2255	1.9316	2.3657	2.8975
2021	0.0690	0.1278	0.2366	2088	2.0128	2.4733	3.0392
2022	0.0582	0.1083	0.2014	1558	1.9929	2.4735	3.0701
2023	0.0487	0.0936	0.1799	1403	1.8737	2.4099	3.0996
2024	0.0403	0.0827	0.1699				

\* Official landings 1986–2002 and ICES estimated landings 2003–2023.

### Sources and references

EU. 2019. Regulation (EU) 2019/472 of the European Parliament and of the Council of 19 March 2019 establishing a multiannual plan for stocks fished in the Western Waters and adjacent waters, and for fisheries exploiting those stocks, amending Regulations (EU) 2016/1139 and (EU) 2018/973, and repealing Council Regulations (EC) No 811/2004, (EC) No 2166/2005, (EC) No 388/2006, (EC) No 509/2007 and (EC) No 1300/2008. Official Journal of the European Union, L 83. 17 pp. <http://data.europa.eu/eli/reg/2019/472/oj>

ICES. 2023a. Benchmark workshop 2 on development of MSY advice using SPiCT (WKBMSYSPICT2). ICES Scientific Reports. 5:65. 472 pp. <https://doi.org/10.17895/ices.pub.23372990>

ICES. 2023b. Advice on fishing opportunities. In Report of the ICES Advisory Committee, 2023. ICES Advice 2023, Section 1.1.1. <https://doi.org/10.17895/ices.advice.22240624>

ICES. 2024. Working Group for the Celtic Seas Ecoregion (WGCSE). ICES Scientific Reports. 6:44. <https://doi.org/10.17895/ices.pub.25866667>

Radford, Z., Hyder, K., Zarauz, L., Mugerza, E., Ferter, K., Prellezo, R., Strehlow, H. V., et al. 2018. The impact of marine recreational fishing on key fish stocks in European waters. PLoS ONE, 13: e0201666. <https://doi.org/10.1371/journal.pone.0201666>

[Download the stock assessment data and figures](#)

Recommended citation: ICES. 2024. Pollack (*Pollachius pollachius*) in subareas 6–7 (Celtic Seas and the English Channel). In Report of the ICES Advisory Committee, 2024. ICES Advice 2024, pol.27.67.

<https://doi.org/10.17895/ices.advice.25019477>